



# MONTHLY MEMBERSHIP PROGRESS REPORT

Results as of: 12/31/2014

Multiple District 27

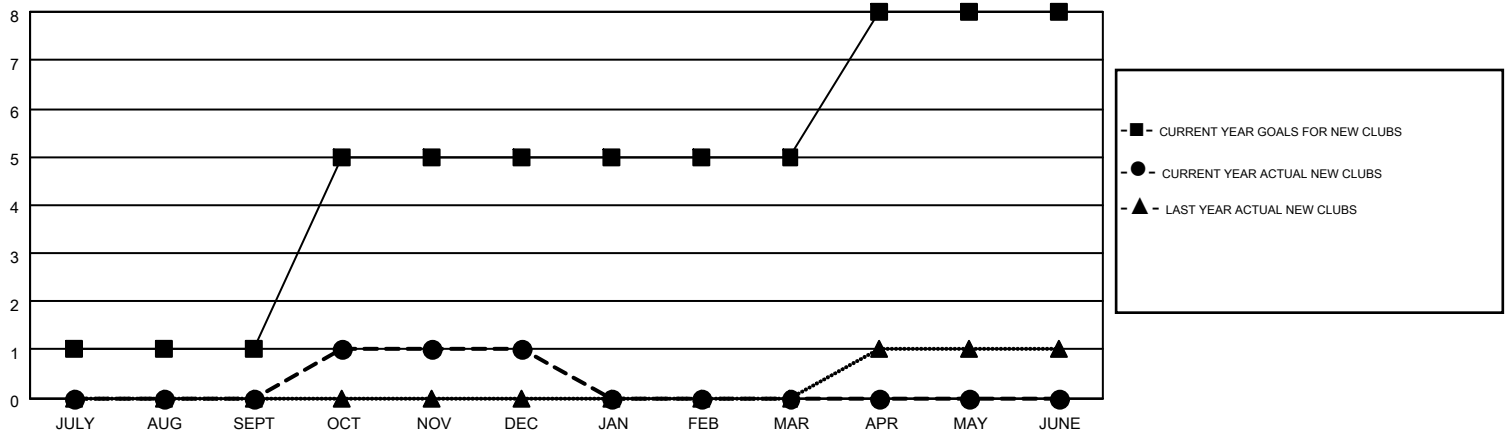
LOCATION: WISCONSIN

GMT: JUDY HANKOM

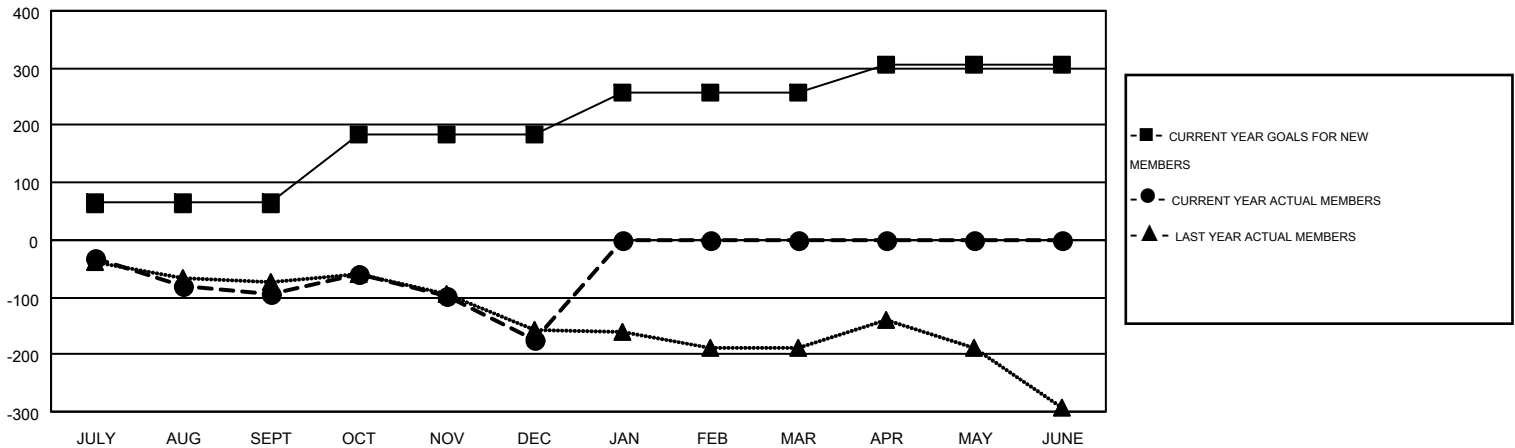
GMT CA 1

Clubs					Members				
RESULTS FOR 2014-2015					RESULTS FOR 2014-2015				
QUARTER	NEW CLUB GOAL	NEW CLUBS	DROPPED CLUBS	NET GAIN/LOSS	QUARTER	NEW MEMBER GOAL	CHARTER AND NEW MEMBERS ADDED	DROPPED MEMBERS	NET GAIN/LOSS
JULY/AUG/SEPT	1	0	4	-4	JULY/AUG/SEPT	64	349	443	-94
OCT/NOV/DEC	4	1	1	0	OCT/NOV/DEC	119	369	451	-82
JAN/FEB/MAR	0	0	0	0	JAN/FEB/MAR	75	0	0	0
APR/MAY/JUNE	3	0	0	0	APR/MAY/JUNE	47	0	0	0

GOALS AND ACTUAL NEW CLUBS CUMULATIVE



GOALS AND ACTUAL MEMBERS CUMULATIVE



DROPPED CLUBS: 5	267 CLUBS OF 543 ADDED 1 OR MORE NEW MEMBERS	<u>GENDER DISTRIBUTION</u>	
		MALE	14,768 (80.58%)
<u>DROPPED MEMBERS</u>		FEMALE	3,559 (19.42%)
DECEASED	101	<a href="#">CLICK HERE FOR HEALTH ASSESSMENT DATA</a>	
CLUB CANCELLED	17		
OTHER	776		
TOTAL	894	FAMILY UNIT MEMBERS	3,117
		HEAD OF HOUSEHOLD	1,530
		NON-HEAD OF HOUSEHOLD	1,587